

# Neighborhood Newsletter

An occasional printed publication of the South River City Citizens' Neighborhood Association, Established 1973



## Letter From the President

Greetings Neighbors! The summer solstice is upon us and the new season officially starts June 21. It's hard to believe I've had the privilege of being SRCC President for a year now. When I really started getting involved with our organization early last year, I barely knew anyone in the neighborhood personally, nor any of the things that make this area such a wonderful place to live.

As a matter of fact, the main reason why my husband and I started getting involved was because an issue was threatening our neighborhood. It was then we realized that if we didn't start paying more attention and taking part in what happens in our neighborhood, we may lose our quality of life here.

Little did we know that getting involved in our neighborhood association would not be just a civic endeavor, but one that has been incredibly fulfilling and fun. I've had the opportunity to learn more about how the City of Austin works and how surprisingly accessible our city leaders are. I've also had the chance to make a direct impact on the neighborhood by participating in projects and planning for things like sidewalks and parks. Most of all, I've enjoyed getting to know our neighbors personally. It's a wonderful thing when you can ride your bike through the neighborhood and wave to someone you know, walk into a meeting and pat a neighbor on the back, and show up at a park clean-up day with dozens of other familiar faces.

If you're reading this newsletter right now, then you're already interested in knowing what goes on in our neighborhood. I encourage everyone to join us at any of our monthly meetings and events to get to know your neighbors and neighborhood. Sign up for our new Monthly Review email for a quick recap of issues and events, and get involved with one of our committees like neighborhood watch or schools. Even if you don't volunteer, your participation in our meetings is welcomed, encouraged and appreciated.

And with that, a big thank you goes out to our new volunteer Area 6 Coordinator, Laura Gass Weaver! Also, please welcome our new newsletter editor, Maia Reeves. This is a large task that is essential to keeping our neighborhood "in the know," so we'd like to give her a big thank you for stepping up to help.

Until our next issue, enjoy the summer, and stay safe and dry---but not too dry!

—Sounthaly "Tune" Outhavong,  
SRCC President



## SIGN UP FOR MONTHLY UPDATES

We've launched a Monthly Review email distribution to recap neighborhood news and SRCC agenda items from our website on the last Friday of each month.

Follow the Monthly Review for more frequent articles and to learn about key discussion topics before the next General Membership Meeting. The email is available to all in the neighborhood.

To sign up, please visit

[www.srccatx.org](http://www.srccatx.org) or email [communications@srccatx.org](mailto:communications@srccatx.org).

You can also follow SRCC on Facebook and Twitter (@SRCCATX)!

## THE ANNUAL 4TH OF JULY PICNIC IS BACK



Little Stacy Park

Noon

July 4, 2015

Once again, let's gather together with our neighbors to celebrate Independence Day! There will not be any food provided, so please B.Y.O.P (*Picnic*). This will just be a fun, informal gathering. We'll be giving out free vintage t-shirts from past July Fourth celebrations! If you'd like to see the traditional parade return next year, please contact Gretchen Otto ([vicepresident@srccatx.org](mailto:vicepresident@srccatx.org)) to help begin the planning for 2016.

## STACY SCOUTS: YOUR NEIGHBORHOOD LITTER PATROL

Three of your neighbors, two from Travis Heights (Sandy Booth and Elsa Lopez) and one from Bouldin (Susan Holland) joined forces a few years back to pick up litter along Blunn Creek and the greenbelt. We did this on weekends and sometimes during the week. We grew to include other like-minded people, some with children in tow, over time.

In October 2012 we were officially recognized by *Keep Austin Beautiful (KAB)* as a partner in their *Adopt-a-Creek* program, and we took on the name *Stacy Scouts*. We have become stewards of Blunn Creek, from Big Stacy Park to Little Stacy. With official status, we took on the organizing, at least four clean-up events each year. Most recently, we participated in the 30<sup>th</sup> anniversary *KAB Clean Sweep* on April 11th. Before that, we took part in *It's My Park Day* on March 7. For that event, we were joined by people from other parts of Austin, includ-

ing a Muslim high school youth group. KAB provides us with supplies: trash bags, gloves, poison ivy lotion, long-handled grabbers, etc., and we report back with a tally of trash and recyclables collected. Stacy Scouts have collaborated with neighbor Todd Jackson who works for Watershed Protection when he has coordinated tree planting along the creek, and David Todd (a long-time steward of Blunn Creek). Saplings have been donated by Tree Folks; 1,475 bare root trees were put into the ground. You'll notice some of these small trees in the Grow Zones which Todd has established. Vegetation in areas along the creek will fill in and help reduce run-off.

Of late, our numbers have diminished a bit, so we are looking for others to join us in keeping our creek and park beautiful. If you would like to be added to the Stacy Scout volunteers, please email Susan Holland at [www.susan\\_holland2@yahoo.com](mailto:www.susan_holland2@yahoo.com).

—Sandy Booth

# RIVERSIDE PEDESTRIAN CROSSING AT ALAMEDA

The City of Austin recognizes the benefit of PHBs (Pedestrian Hybrid Beacons), which are pedestrian-activated warning devices, and has created a master list of PHB requests. This list is continually updated and the requests are scored and ranked twice a year. The score for each request is based on the following criteria:

- **Roadway Score:** Includes considerations such as the distance to the nearest signal or stop sign, number of lanes to cross, speed limit and whether there is a median.
- **Pedestrian Score:** Includes considerations such as the pedestrian crash history and the number and type of pedestrian attractors in the area. Pedestrian attractors may include stores, restaurants, multifamily developments, bus stops, churches, schools, parks, etc. Also considers

whether there is a facility in the area whose primary clientele is a mobility impaired community.

- **Community Score:** Includes considerations such as whether the requested location is recommended for a PHB as part of an adopted neighborhood, corridor or master plan; is part of a school route or within an Environmental Justice Area.

At present, the SRCC neighborhood has 5 PHB requests that have been scored and ranked but not constructed (listed here with their criteria scores) - Congress @ Krebs (Score 610), 515 S Congress (Score 540), Congress @ Alpine (Score 515), Riverside @ Summit (Score 415), and Riverside @ Alameda (Score 215).

Even though PHBs have created numerous additional safe crossings throughout the

City, all existing PHBs were built using funding from sources (such as bonds) that are now used up. There are no existing or planned funds specifically for future PHBs. Hopefully the City will be able to identify new funding sources so that this program can continue.

A PHB at Riverside and Alameda would greatly enhance the safety of pedestrians crossing Riverside at Alameda to reach the boardwalk, but some SRCC residents have noted concerns about an additional traffic signal along Riverside that may increase cut-through traffic through the neighborhood. There are also concerns that if a PHB crossing is installed at this location that non-residents may begin parking along Alameda to access the Town Lake Trail.

—Mike Sledge,  
SRCC

Transportation Committee

# TRAVIS HEIGHTS ART TRAIL 2015

On November 7-8, the neighborhood and all of Austin will again be able to enjoy the Travis Heights Art Trail. This will be the 13<sup>th</sup> annual! How time flies. We have some changes this year. The good news is we are now a recognized art event by the city of Austin and they are providing some of our funding. We also have 501c3 status, which gives our sponsors a tax write off.

Sadly, we are losing



Margaret Adie who is moving to San Marcos. For ten years, she helped organize the show. We will miss her, but other artists have stepped up. Sally Frazer and Ann Seago are now our liaisons to the city of Austin. They have already finished with our application for 2016! Cheryl Rae is our sponsor solicitation coordinator and she is working hard, contacting past and new sponsors.

Our sponsors are what pay for our advertising, thus allowing the show to happen. Brian Angers is redesigning the website. Others are stepping forward to help with advertising and social media so we are in good shape. By the way, you don't have to be a business to be sponsor. Anyone can help sponsor us.

We would love to find someone that has connections with the Austin American Statesman. We need to be a featured event in the paper. Anyone have connections?

New artists are welcome. So if you have thought about participating before, this year would be a great time to join us. Or you could open your Travis Heights home to artist friends. The show is a nice size but the more the merrier.

Everyone is welcome to participate in some way. You don't have to be an artist to participate in the Travis Heights Art Trail. Give me a call or email and find out how you can join. See you in November!

—Charlotte Bell  
512-447-2150,  
charwolf100@gmail.com

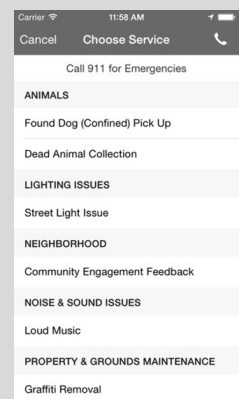
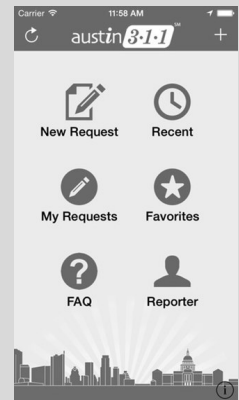
## Do You Have the 3-1-1 App?

Did you know that you can quickly report neighborhood issues to the City of Austin from your smartphone? Residents can create service requests and easily access city departments by downloading the Austin 3-1-1 mobile app to iPhone or Android devices. Launched in July 2014, the app expands on the existing 3-1-1 phone hotline and aims to increase the City's efficiency in responding to resident inquiries. Information sent from the app goes immediately to the appropriate City department to reduce time and errors. You can also report service requests at

[www.austintexas.gov/department/311](http://www.austintexas.gov/department/311)

or by dialing 3-1-1 locally.

—Justin Chang



## BIG STACY: TRAIL REPAIR & FIELD RESTORATION

City of Austin Watershed Protection is currently designing solutions to remediate the erosion in Big Stacy Park that interferes with trail mobility between the Travis Heights Elementary School (THES) and the playing fields. Trail surfaces on the west side of the pedestrian bridge spanning Blunn Creek can become deeply rutted and hazardous during heavy rain periods. At the May 5th SRCC meeting, representatives from both Watershed Protection and Parks & Recreation outlined a project to remedy the erosion and improve the field and trail

areas. The general solution is to stop most of the stormwater runoff from the fields before it reaches the track and trail, reducing the trail erosion. This project envisions the creation of “infiltration meadows” within the playfields using low berms. These meadows will help reduce runoff toward the trail, solving the erosion problem for most rain events, providing a much improved playing field for park users. Current construction plans include:

- Tilling, re-grading the playing fields to decompact

soil and reduce runoff

- Constructing low berms to catch runoff and facilitate infiltration

- Removing debris from the rain gardens to restore capacity for runoff and sediment capture.

PARD will reconstruct trail segments below the infiltration meadows once complete. This trail work will include the area adjacent to the bridge and extend to the north, completing trail grading and surfacing that began over a year ago. Construction is slated to begin later this summer. Details and updates can be found on



the SRCC website, or contact Clayton Ernst at the City of Austin Watershed Protection at 512-974-9792 with any questions. —Justin Chang

## SUCCESSSES AT TRAVIS HEIGHTS ELEM.

The 2014-2015 school year has been an AMAZING and BUSY one as we celebrated the 75th Anniversary of Travis Heights Elementary. We had an incredible 75th Anniversary Picnic in April that drew over 300 student/staff alumni and neighbors. And together as a community we've been able to raise an unprecedented amount through our Mission 75 campaign to help build the financial resources of the school for the longer term. We set our goal at \$75,000 and have raised \$66,133! We are grateful to all the parents and neighbors who donated, as well as the SRCC organization itself.

THANK YOU! We'd also like to thank the local businesses who were big financial supporters of Mission 75: Moore-Tate, Home Slice Pizza, JuiceLand, Uncommon Objects, Carol Dochen Realtors, Bill Taute Homes, Green Mango Real Estate, Alkali Marketing, HireStarter, Hey Cupcake!, Juice Real Estate, Güero's Taco Bar, The Fairview, PSW Development, Bird's Barbershop, Austin Motel, Cain's Fine Catering, MaKenzie Price Capstar Lending, Cosella Dörken Delta, and Blase Design. Plus, thank you to the many local businesses that have supported our

school through in-kind donations. We are fortunate to be a part of such a generous and civic-minded community!

The 2015-2016 school year is going to be even better. The school has implemented its technology plan and now has 1:1 student-to-computer ratio, with a full-time technology instructor and teachers trained in the use of technology in the classroom. The goal is to use technology to supplement instruction, differentiate instruction, and support children's interface with progressive technology. We will also be in the third year of service learning. This year service learning project themes included nutrition, animal care, water

conservation, economies, and assisting people with special needs. There are spaces available, both free and tuition-supported, in Dual Language and English-Only Pre-Kindergarten classes for the fall. There are also still spaces available for K-5, including transfer students. All students, including current students, need to register online. For more information about this, please go to [my.austinisd.org](http://my.austinisd.org)

Mark your calendars for our “Meet the Teacher Ice Cream Social” on Aug 21 from 4-6 p.m., and the “New Parent Welcome Coffee” on the first day of school, August 24th, after drop-off. See you in the 2015-2016 school year! —Karyn Couvillion

## LITTLE STACY STREAM RESTORATION

In an effort to remediate hazardous road conditions caused by eroded streambanks along Little Stacy Park, City of Austin Watershed Protection is planning to turn the park segment of Sunset Lane into a trail. These efforts will re-direct stormwater runoff generated by the roadway and limit other sources of runoff. The Little Stacy Park Stream Restoration Project will include expanding the Grow Zone along the creek to slow down and filter stormwater runoff. Existing damaged areas will be rehabilitated with native plants and greenery. The closed portion of Sunset Lane will be converted into a

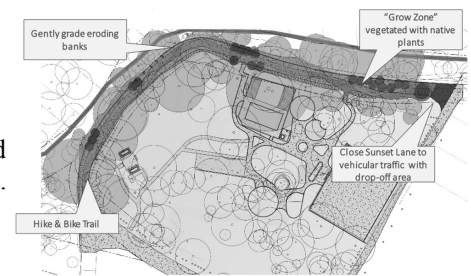
hike & bike trail to provide natural space and amenities for neighborhood park users.

The plan to abandon the roadway and extend the park trail system was a choice to protect the creek from construction impacts. Efforts to restore roadway function would require costly construction to re-construct the eroded road embankments. Urban channel restoration costs range from \$400-1,000 per linear foot. This work would require substantial over-excavation to re-construct the embankment (up to 15ft heights), with a loss of trees and habitat. Construction of a temporary

creek channel access route would likely damage natural limestone formations between the eroded road embankment sections. This reach is largely defined by beautiful natural limestone

inset flumes formed by flows over the eons. Protecting these features would be a major cost and their potential degradation could not be ensured. The choice for a trail instead of roadway will preserve the wildish nature of our creek and restore its connection to the park.

These efforts will be coordinated with broader renovation of old recreational



equipment, play areas, and access in Little Stacy Park by Parks and Recreation. The project is currently in the design phase, with construction anticipated to begin in 2016. Follow the SRCC website for updates on the restoration project. For details, please contact Janna Renfro, P.E. at 512-974-3422 or [janna.renfro@austintexas.gov](mailto:janna.renfro@austintexas.gov).

—Justin Chang



**Area Coordinators**

- Area 1 Claudette Lowe 512-447-1514
- Area 1 Diane Presti 512-217-6651
- Area 2 Elizabeth Day 512-441-1759
- Area 2 Kathy Henley 512-666-3545
- Area 3a Jo Webber 512-441-3117
- Area 3 Sara Newsom 512-444-8292
- Area 3b Brooks Kasson 512-444-8100
- Area 3b Tim Boswell 512-589-5593
- Area 4a Sam Martin 512-441-5222
- Area 4a Mary Friedman 512-619-5773
- Area 4b Kris Asthalter 512-443-4963
- Area 5 Neal Nuwash 512-462-9093
- Area 5 Elloa Mathews 512-442-6986
- Area 6 Rachel McClure 512-326-5572
- Area 6 Laura Gass Weaver  
gassweaver@sbcglobal.net
- Area 7 Kelvin Glover 512-415-2027
- Area 7 Jackie.Hatfield  
Jackie.hatfield@gmail.com
- Area 7 Ashley Margerison  
ashley.margerison@gmail.com
- Area 8 Maria Martinez 512-443-9784
- Area 8 Kim Lanzillotti 512-658-8565

**Standing Committees**

**Planning & Zoning**

- Jean Mather 512-444-4153
- Kent Anschutz kent@kentanschutz.com
- Marc Davis marc.davis@gmail.com
- Russell Fraser russell\_fraser@msn.com
- David Swann swanito@att.net

**Parks, Schools & Environment**

- David Todd (Parks) 512-416-0400
- Sherri Ancipink (Schools) 512-707-2627
- Marty Christman (Environment)  
512-912-0724

**1st Monday every month at 7:15pm at  
Grace United Methodist Church, 205 E. Monroe**

*SRCC Meetings*

*We thank all our officers, area coordinators, committees, and representatives for their dedication to our community!*

Call your coordinator for SRCC questions, volunteer opportunities, or to help deliver newsletters.

**Transportation & Public Safety**

- Mike Sledge transportation@srccatx.org
- Jeff Kessel jeff@impactpro.com
- Neighborhood Patrol Chair  
—Volunteer Needed!

**Communications**

- Justin Chang communications@srccatx.org

**Membership**

- Carol Martin 512-441-5222

**Financial**

- Sam Martin 512-441-5222

**Newsletter**

- Maia Reeves newsletter@srccatx.org

**East Riverside (ERO)**

- Toni House 512-447-8090

**St. Edward's**

- Elloa Mathews 512-442-6986

**South Central Coalition**

- Danette Chimenti 512-912-8290

**Travis Heights Art Trail**

- Charlotte Bell 512-447-2150

**Travis Park Apt/Austin Interfaith**

- Terry Franz 512-447-8786

**SRCC Officers**

**President**

- Sounthaly "Tune" Outhavong  
president@srccatx.org

**Vice President**

- Gretchen Otto vicepresident@srccatx.org

**Treasurer**

- Nancy Byrd treasurer@srccatx.org

**Secretary**

- Garret Nick secretary@srccatx.org

**Ad Hoc Committees**

**Norwood House**

- Wolf Sitler 512-447-2150

**TH-FP Historic District**

- Michele Webre 512-422-1262

**Representatives**

**Austin Neighborhood Council**

- James Bilodeau ancrep@srccatx.org

**City District 9**

- James Bilodeau ancrep@srccatx.org

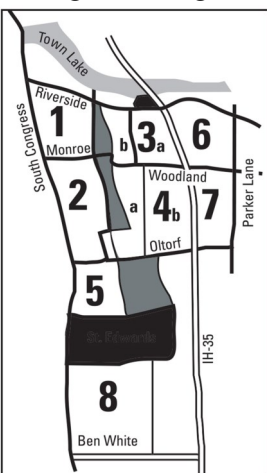
**Join Your Neighbors in SRCC**

**Become a member and be eligible to vote!**

Join or renew online ([www.srccatx.org](http://www.srccatx.org)) or at membership table at meetings.

To pay via PayPal, go to [www.srccatx.org/membership-dues/](http://www.srccatx.org/membership-dues/). You can also send a check made payable to SRCC, along with this completed form to: **SRCC, Attention: Treasurer, P.O. Box 40632, Austin, TX. 78704.**

*Notes—Dues and contributions are not tax-deductible. If dues lapse, renew at a SRCC meeting and be eligible to vote. New members can vote after 28 days.*



Number of Years (circle one):  
 1      2      3

Membership (circle one):  
 Individual      Family

Membership Fee Due: \$
Add'l Donation to
SRCC General Fund: \$
<b>TOTAL: \$</b>

Membership Levels		
No. Of Years	Individual	Family
<b>1</b>	<b>\$20</b>	<b>\$35</b>
<b>2</b>	<b>\$35</b>	<b>\$65</b>
<b>3</b>	<b>\$50</b>	<b>\$95</b>

Date: \_\_\_\_\_

Name (s): \_\_\_\_\_

Address: \_\_\_\_\_

SRCC Area (See Map): \_\_\_\_\_

Phone (s): \_\_\_\_\_

Email (s): \_\_\_\_\_